

FILLING THE BLOCK REGISTER..... 2

THE 1ST WAY TO FILL THE BLOCK REGISTER – DON’T..... 2

THE 2ND WAY TO FILL THE BLOCK REGISTER – DO IT YOUR SELF 2

THE 3RD WAY TO FILL THE BLOCK REGISTER – THE BLOCK FIELD..... 3

THE 4TH WAY TO FILL THE BLOCK REGISTER – IMPORT IT 5

Filling the block register

The block register is where you combine different activities from the subject register. You combine subjects that have to be taught at the same time. This register is known to be difficult to use for beginners and therefore we have made several ways to make it easier. All in all there are four different ways of using the block register. These four ways will be described in the following text.

The 1st way to fill the block register – don't

Some of the old boys who have been around earlier versions of Tplan that lacked the block register know that everything can be made in the subjects register.

School	Teachers	Teacher pools	Classes	Rooms	Subjects	Blocks	Periods	Steering	Compr-Table	Full Tex
	Class	ACT-	Subject-	Periods	Period	Teacher	Room	Class	Class	Full name
	CLA	Name	Name		B' down			CLB	CLC	
00001	7&A	Ma	Ma	2	11	JA		7&B		7Ma-Ma1
00002			Ma			KW		7&C		7Ma-Ma2
00003			Ma			DM		7&D		7Ma-Ma4
00004			Ma			YT		7&E		7Ma-Ma5
00005			Ma			AH		7&F		7Ma-Ma6
00006			Ma			ESM				7Ma-Ma7
00007			Ma			CDW				7Ma-Ma8

As you see – one activity contains seven teachers, five classes and seven “Full names” i.e. seven school units. This is a genuine block even if the block register is not used. Moreover it is also a genuine activity. Check out the manual to see the difference between a block and an activity!

The 2nd way to fill the block register – do it your self

When the block register first arrived there were no automatic ways to fill it out. You had to enter every single bit of information your self.

School	Teachers	Teacher pools	Classes	Rooms	Subjects	Blocks	Periods	Steering	Compr-Table	Full Tex
	Class	ACT-	Subject-	Periods	Period	Teacher	Room	Class	Class	Full name
	CLA	Name	Name		B' down			CLB	CLC	
00001	7&A	Ma	Ma	2	11	JA		7&B		7Ma-Ma1
00002	7&C	Ma	Ma	2	11	KW		7&C		7Ma-Ma2
00003	7&D	Ma	Ma	2	11	DM		7&D		7Ma-Ma4
00004	7&E	Ma	Ma	2	11	YT		7&E		7Ma-Ma5
00005	7&F	Ma	Ma	2	11	AH		7&F		7Ma-Ma6
00006		Ma	Ma			ESM				7Ma-Ma7
00007		Ma	Ma			CDW				7Ma-Ma8

First of all the subject register must now be a little different. As you see – the former one activity is now split up into five activities. In the block register you can now collect these activities.

Filling the block register

School	Teachers	Teacher pools	Classes	Rooms	Subjects	Blocks	Periods	Steering	Compr-Table	Full Text	Tabl		
Class	Block-	Period	Refe-	POS 1	POS 2	POS 3	POS 4	POS 5	POS 6	POS 7	POS 8	Dir.	
CLA	name	B'down	rence									[P/D]	Comments
00001													
00002	7AA	MATH	11		Ma	Ma							
00003				7AC	Ma	Ma							
00004				7AD	Ma	Ma							
00005				7AE	Ma	Ma							
00006				7AF	Ma	Ma							

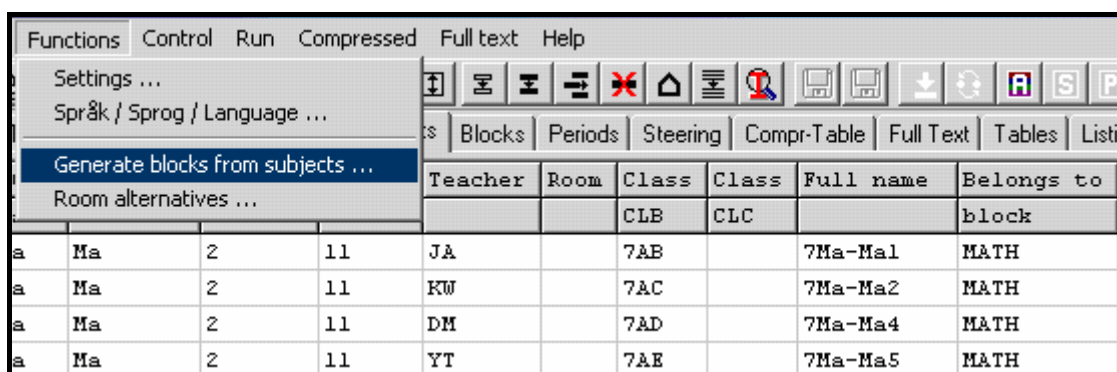
Here is the block register. I have made a block named 7AA MATH with a period breakdown of 11 containing the activities 7AA Ma, 7AC Ma, 7AD Ma, 7AE Ma and 7AF Ma. As you have noticed the content of the field Class plus the content of the field POS 1 is exactly the contents of the first two fields in the subject register. You only have to enter the reference field if it differs from the content of the Class CLA field.

The 3rd way to fill the block register – the block field

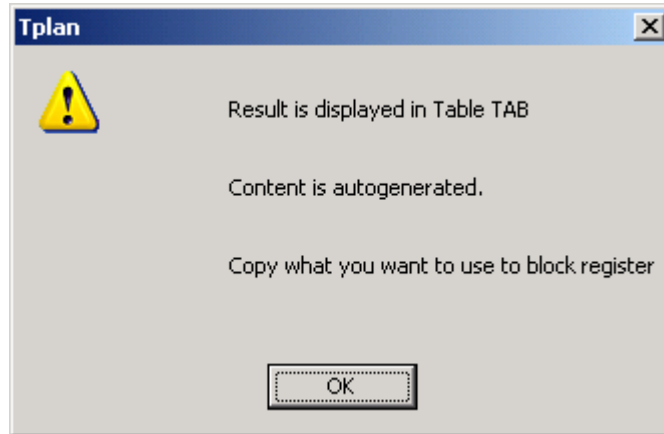
You may have noticed this new field in the block register. The former text was KLAREF that had a meaning in former versions of Tplan. This field has not been used for some time and is now being used for the block that the activity belongs to. When you have filled out this field you can automatically construct the content of the block register.

Teachers	Teacher pools	Classes	Rooms	Subjects	Blocks	Periods	Steering	Compr-Table	Full Text	Tables	Listi
Class	ACT-	Subject-	Periods	Period	Teacher	Room	Class	Class	Full name	Belongs to	
CLA	Name	Name		B'down			CLB	CLC		block	
7AA	Ma	Ma	2	11	JA		7AB		7Ma-Ma1	MATH	
7AC	Ma	Ma	2	11	KW		7AC		7Ma-Ma2	MATH	
7AD	Ma	Ma	2	11	DM		7AD		7Ma-Ma4	MATH	
7AE	Ma	Ma	2	11	YT		7AE		7Ma-Ma5	MATH	
7AF	Ma	Ma	2	11	AH		7AF		7Ma-Ma6	MATH	
	Ma	Ma			ESM				7Ma-Ma7	MATH	
	Ma	Ma			CDW				7Ma-Ma8	MATH	

To automatically create the content of the block register you simply select Functions in the main menu and then Generate blocks from subjects as shown here:



First you get advice on where to find the result of the automatically created block register:



Press OK to continue. Here is the result:

Teachers		Teacher pools		Classes		Rooms		Subjects		Blocks		Periods		Steering		Compr-Table		Full Text		Tables		Listings	
Class	Block-	Period	Refere-	POS 1	POS 2	POS 3	POS 4	POS 5	POS 6	POS 7	POS 8	Dir.											
CLA	name	B'down	rence									[P/D]	Comments										
7AA	MATH	11		Ma	Ma																		7Ma-Ma1, JA, Maths
			7AC	Ma	Ma																		7Ma-Ma2, KW, Maths
			7AD	Ma	Ma																		7Ma-Ma4, DM, Maths
			7AE	Ma	Ma																		7Ma-Ma5, YT, Maths
			7AF	Ma	Ma																		7Ma-Ma6, AH, Maths

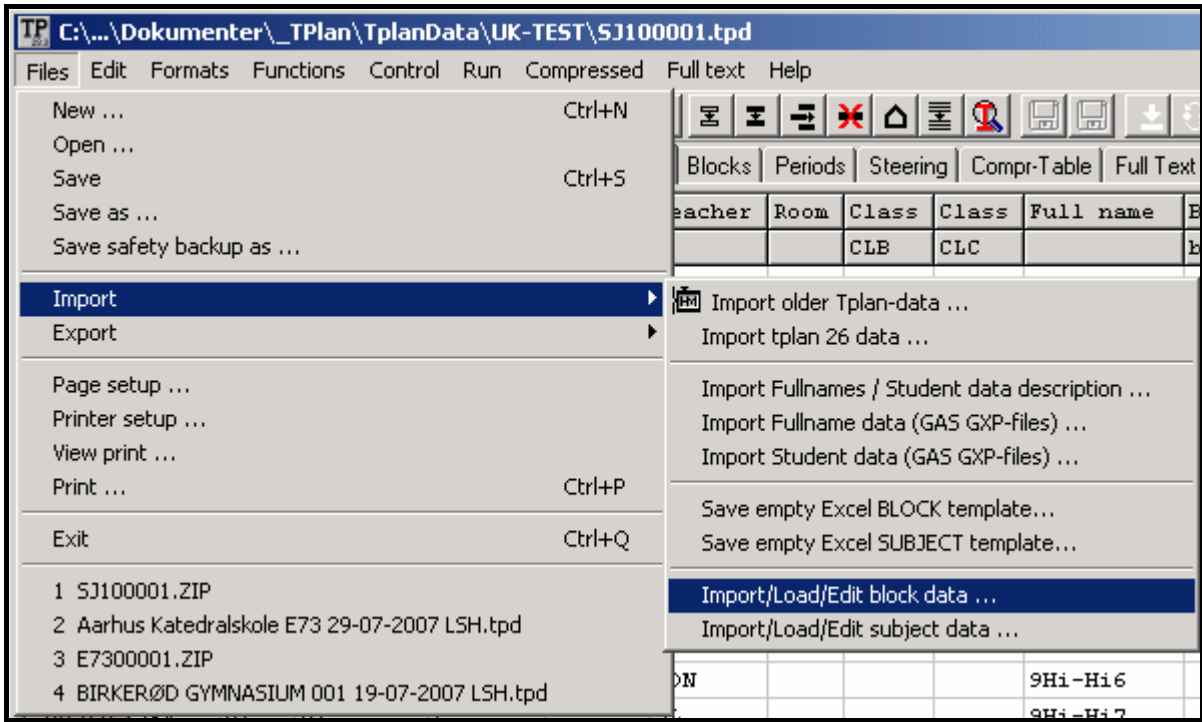
The result is displayed in the Tables TAB and if you want to use any of it you have to select it, copy it and paste it into the block register. As you probably have noticed, the automatically generated block register also gets an automatically generated comment consisting of the full name, the teacher and the comment from the subject register. This makes it easier to comprehend when you read the block register.

You may have to correct the information because they are after all automatically generated.

Filling the block register

The 4th way to fill the block register – import it

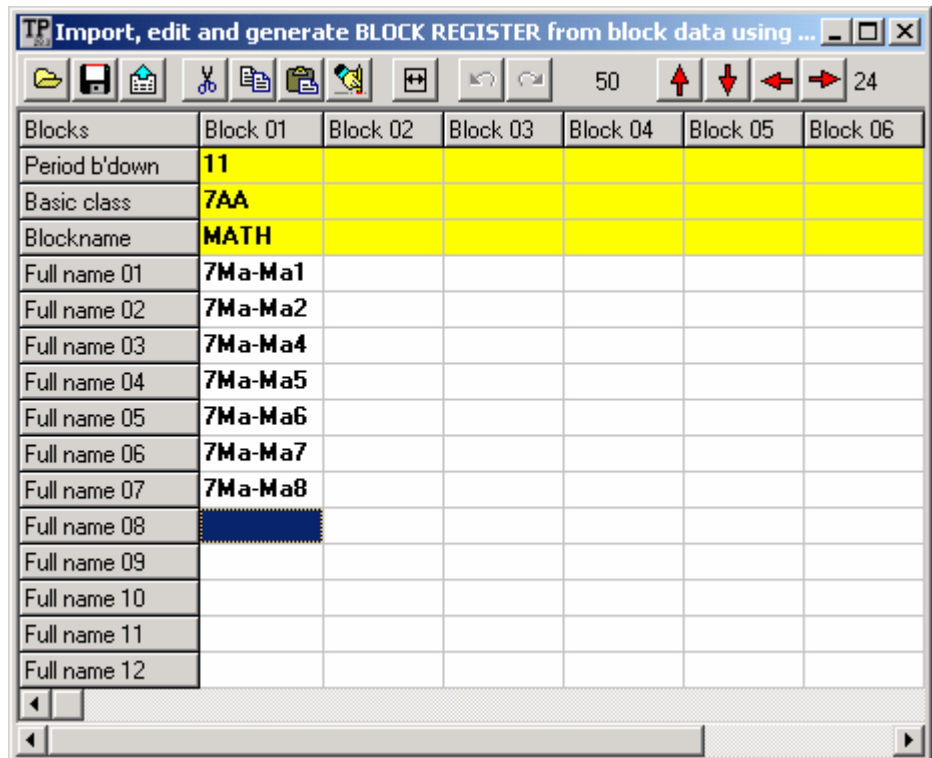
As the school only works with the full names it is much easier if you can work that way. That is exactly what you can do using the **Files – Import – Import / Load / Edit block data ...** in the main menu.



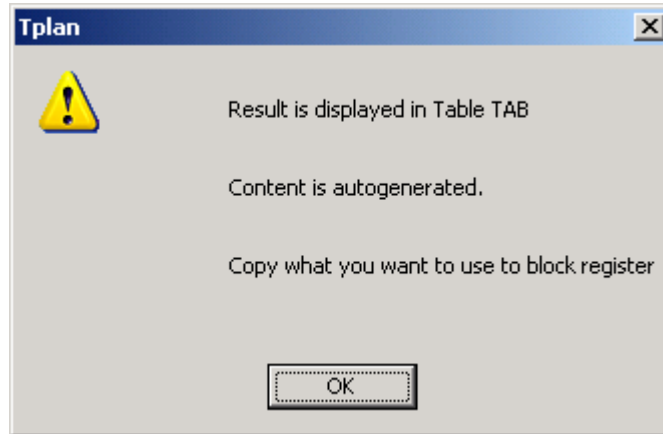
All you need is the period break down, the basic class and a list of the participating classes given by their full names i.e. the way you get it from your school administration.

You might even get it as an Excel file ready for use. Copy and paste the content into Tplan and you are ready to go.

Press the button with the green up-arrow to start the automatic generation of the block register.



First you get advice on where to find the result:



As before – the result is displayed in the Table TAB and you have to copy – paste what you want to use:

Teachers		Teacher pools		Classes		Rooms		Subjects		Blocks		Periods		Steering		Compr-Table		Full Text		Tables		Listings	
Class	Block-	Period	Refe-	POS 1	POS 2	POS 3	POS 4	POS 5	POS 6	POS 7	POS 8	Dir.											
CLA	name	B'down	rence									[P/D]	Comments										
7AA	MATH	11		Ma	Ma																		7Ma-Ma1, JA, Maths
			7AC	Ma	Ma																		7Ma-Ma2, KW, Maths
			7AD	Ma	Ma																		7Ma-Ma4, DM, Maths
			7AE	Ma	Ma																		7Ma-Ma5, YT, Maths
			7AF	Ma	Ma																		7Ma-Ma6, AH, Maths

This only works if the subject register is already with all subjects. The automatically generated block register is simply made by searching through the subject register to find the lines containing the full names given in the list.

This is all for now.

Lasse Storr-Hansen
August 2nd 2007